

# Tokyo Survey Book 1: An Overview Of Towns Where Seniors Can Lead Active Lifestyles ~ 23 Ward Comparison ~

Published November, 2008 / A4 Size 103 Pages

There are approximately 1.34 million healthy, able-bodied seniors (65 and above) living in Tokyo's 23 wards. Utilizing fixed quantity data that evaluates each ward from seven different angles, this report provides a relative assessment of living environments in which seniors can comfortably live. Though the results show differences in substance and degree, the report was able to ascertain that all wards offer attractive and pleasant living environments

## Aging in the 23 wards

- In 2005 the population of seniors stood at 1.59 million, this is expected to increase by a factor of 1.4 over the next twenty years.
- The percentage of the total population comprised by seniors in 2005 was 18.8%, a 5 percentage-point increase from 10 years ago.
- Compared to 10 years ago, blocks and neighborhoods with seniors comprising 20% or more of their populations are widely spread across the entire 23 ward district (see Figure 1., Figure 2.).

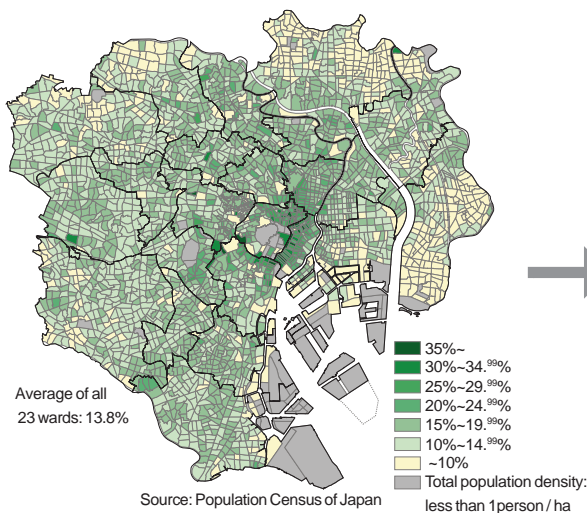


Figure 1. Population ratios for seniors by area in the 23 ward district (1995)

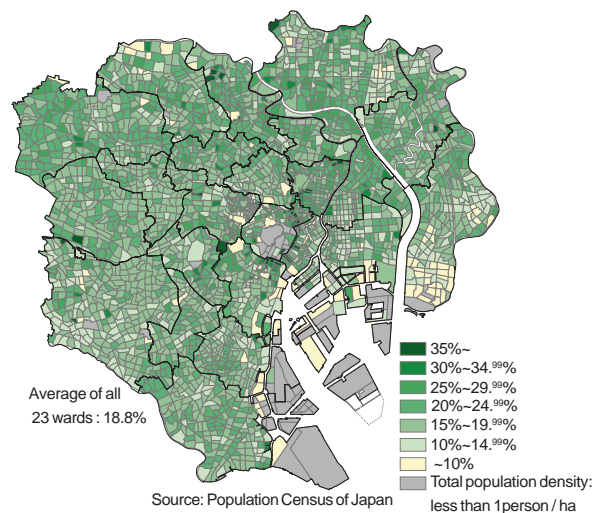


Figure 2. Population ratios for seniors by area in the 23 ward district (2005)

## Towns where seniors can lead active lifestyles

- 35 indicators across seven categories; safety and security; convenience; cost of living; physically stimulating; mentally stimulating; local consciousness; and a feeling of openness were used to evaluate living conditions.
- Each ward's total score is the sum of each evaluating indicator's standard deviation multiplied by the weighting assigned to its importance, usage rate etc (see Figure 3.).
- The three wards deemed the most comfortable to live in for active seniors were Taito, Shibuya, and Bunkyo. A common characteristic shared by all three was a high level of convenience (see Figure 4.).
- The three wards with the lowest total scores were Nerima, Edogawa, and Setagaya (see Figure 4.). When looking at individual indicators, these wards also displayed areas of attractiveness; in Nerima "rent is cheap and golf driving ranges are not lacking"; in Edogawa "it is a safe place for walking, and one can experience a sense of openness when walking"; and in Setagaya "food prices are low, there is an abundance of greenery, and the area is very earthquake resistant".

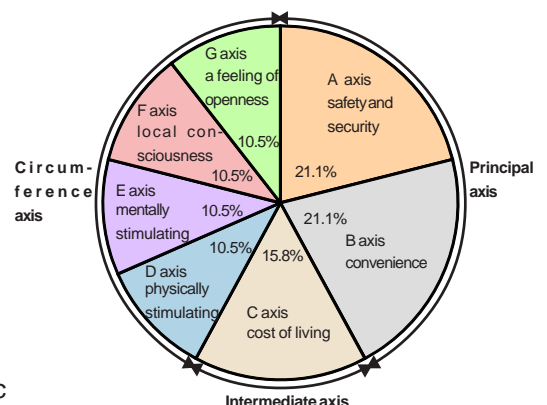
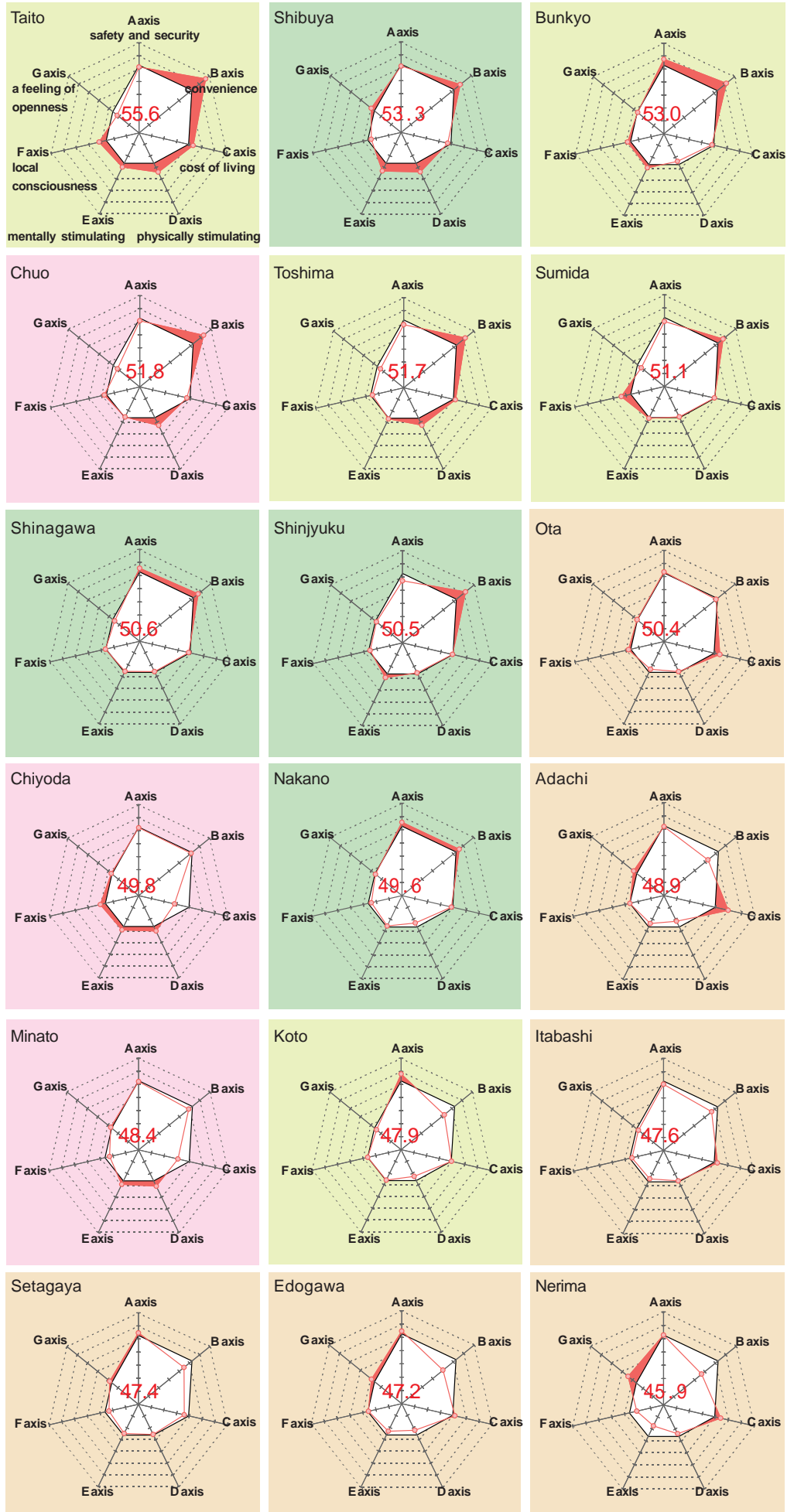
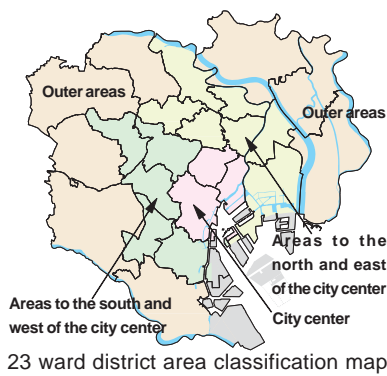


Figure3. Evaluation axis weight



Togenuki-jizoson in Sugamo



Notes: The number in the middle of each chart is the total score, the red line represents each ward's radar chart, and the black line represents the average radar chart of all 23 wards. The red shaded areas in the radar chart represent where each individual ward's score exceeds the average of all 23 wards.

Figure4. Evaluation results for senior-friendly living environments (according to evaluation axis)